

## EVOLVE 2

With the development of Evolve we focused upon enhancing the intuitive comfort and simple user adjustment. It's ergonomically contoured back construction, flexible movement and Adjustable lumbar support, offers a level of comfort and support that is unsurpassed. Evolve incorporates a revised tilt action and the chair

is available in a choice of colours for the moulded components.

Evolve is ideally suited to those who sit at a desk for several hours every day. The inclusion of flexible seat and back membranes enhance comfort and flexibility whilst also delivering excellent thermal benefits to the user.



### Design by Paul Brooks

#### Standard Features (\*Selected models only)

- 5 Star base
- 65mm Hard wheel castors
- Synchronised mechanism with adjustable tension and multi-position back lock
- 60mm seat depth adjustment
- Three degree negative seat tilt
- Flexible seat and back membrane
- Airflow mesh back\*
- Slimline back upholstery\*
- Height adjustable arms\*
- Height adjustable arms with multi-functional arm pad\*

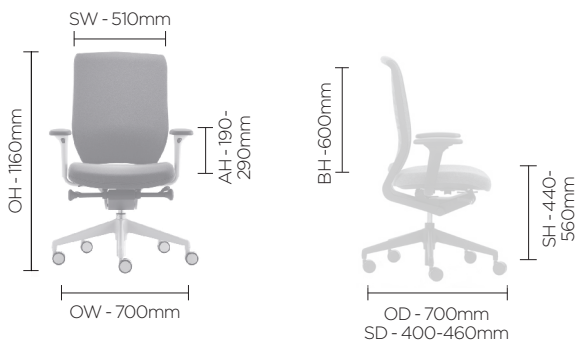
#### Optional Features

- Castors for hard and soft floor coverings
- Gas lift options
- Adjustable lumbar support
- Multiple Fabrics\*
- Polished Aluminium arm carrier\*
- Choice of finish options available – see finish page

#### Performance Standards

- EN1335 -1:2000
- BS5459-2:2000+A8:2008
- GS certified
- EN1335 -2 / 3:2009
- ANSI/BIFMA X5.1:2011
- SCS-EC10.2-2007
- Indoor Air Quality

## DIMENSIONS



## DESIGN

### Paul Brooks

Paul Brooks graduated from Ravensbourne College of Design to go onto the RCA before joining the design team of Robert Heritage, OBE RDI, in 1983.

Paul established his own practice in 1988 and has since worked with a host of UK and European furniture manufacturers becoming a well established figure in the design community with many highly successful designs to his credit.

## EVOLVE 2

With the development of Evolve we focused upon enhancing the intuitive comfort and simple user adjustment. It's ergonomically contoured back construction, flexible movement and Adjustable lumbar support, offers a level of comfort and support that is unsurpassed. Evolve incorporates a revised tilt action and the chair

is available in a choice of colours for the moulded components.

Evolve is ideally suited to those who sit at a desk for several hours every day. The inclusion of flexible seat and back membranes enhance comfort and flexibility whilst also delivering excellent thermal benefits to the user.

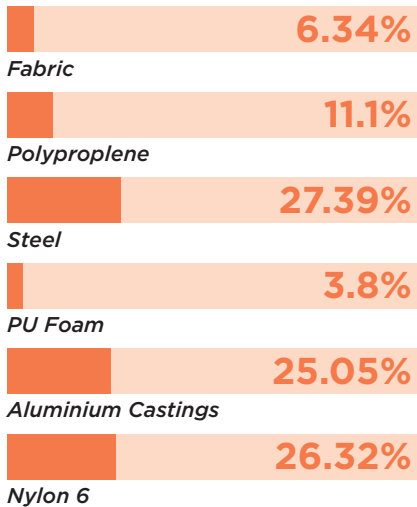


**Design by Paul Brooks**

## ENVIRONMENTAL

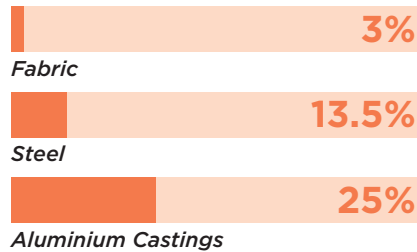
### Material Content

Components are constructed of the following



### Recycled Content

Contains up to 41.5% of Recycled Material



### Recyclability

The range is 99% recyclable

# 99%

Environmental information for this range has been based on EV640HA. For more detail please refer to individual EPA sheets.

## SENATOR 3 R'S

Senator is committed to continually improving the sustainability of all environmental aspects within our business.

To meet both international standards and our own environmental targets we apply the three R's principle

**-Reduce, Reuse and Recycle.**

Whilst recycling is the element which receives the most exposure it is actually the last option available and should never be the prime target in anyone's battle to reduce waste.

It is our duty as individuals and as a company to initially attempt to **Reduce** usage. Then we should look to **Reuse** wherever possible and finally, only after these two processes have been exhausted, should we consider **Recycling**.

# Reduce Reuse Recycle

## FINISH OPTIONS

5 Star base available in Black or Light Grey Plastic and Polished Aluminium

3D airflow mesh back available in Black, Grey or White

Plastic components available in Light Grey or Black

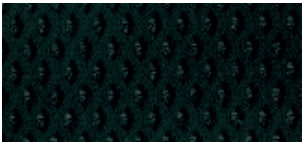
Plastic back membrane available in Black, Dark Grey or Light Grey

Arm carrier available in Black or Light Grey powder coat and Polished Aluminium

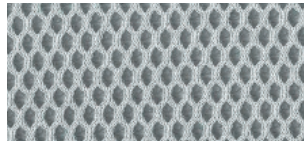
Evolve can be upholstered in a broad range of contract upholstery fabrics, vinyls and leathers from Senator standard upholstery collection

---

### Airflow Mesh Colours



Black



Grey



White

### Component Finish



Black (Plastic)



Light Grey (Plastic)

### Plastic Back Membrane



Black



Anthracite

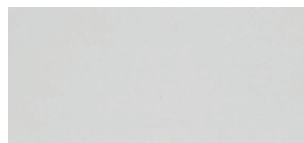


Light Grey

### Base Finishes



Black (Plastic)



Light Grey (Plastic)



Polished Aluminium